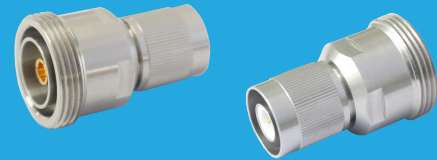


QAE7

SC to 7/16(DIN)

Features:
* Low VSWR

Applications:
* Wireless
* Transmitter
* Laboratory Test
* Radar



Electrical

Frequency: DC-6GHz
VSWR: 1.25 max.
Impedance: 50Ω

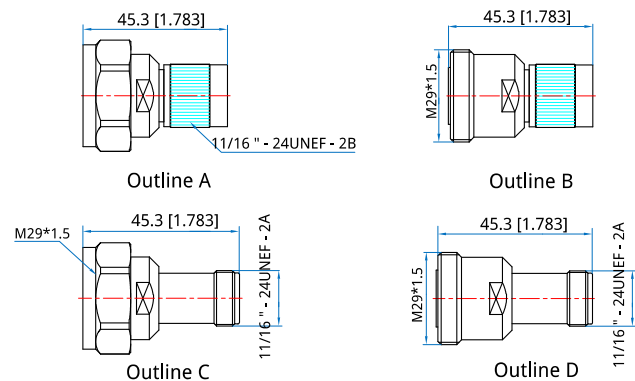
Mechanical

Length: 45.3mm
1.783in
RF Connectors: SC
7/16 DIN
Mating Life Cycle: 500 cycles
Outer Conductor: Nickel Plated Brass or SUS303
Stainless Steel
Dielectric: PTFE
Inner Conductor: Gold Plated Tin-phosphor
Bronze

Environmental

Temperature: -55~+85°C

Outline Drawings



Unit: mm [in]
Tolerance: ±0.2mm [±0.008in]

How To Order

QAE7-MM - SC(m) to 7/16 DIN(m), Outline A

QAE7-MF - SC(m) to 7/16 DIN(f), Outline B

QAE7-FM - SC(f) to 7/16 DIN(m), Outline C

QAE7-FF - SC(f) to 7/16 DIN(f), Outline D

Customization is available upon request.